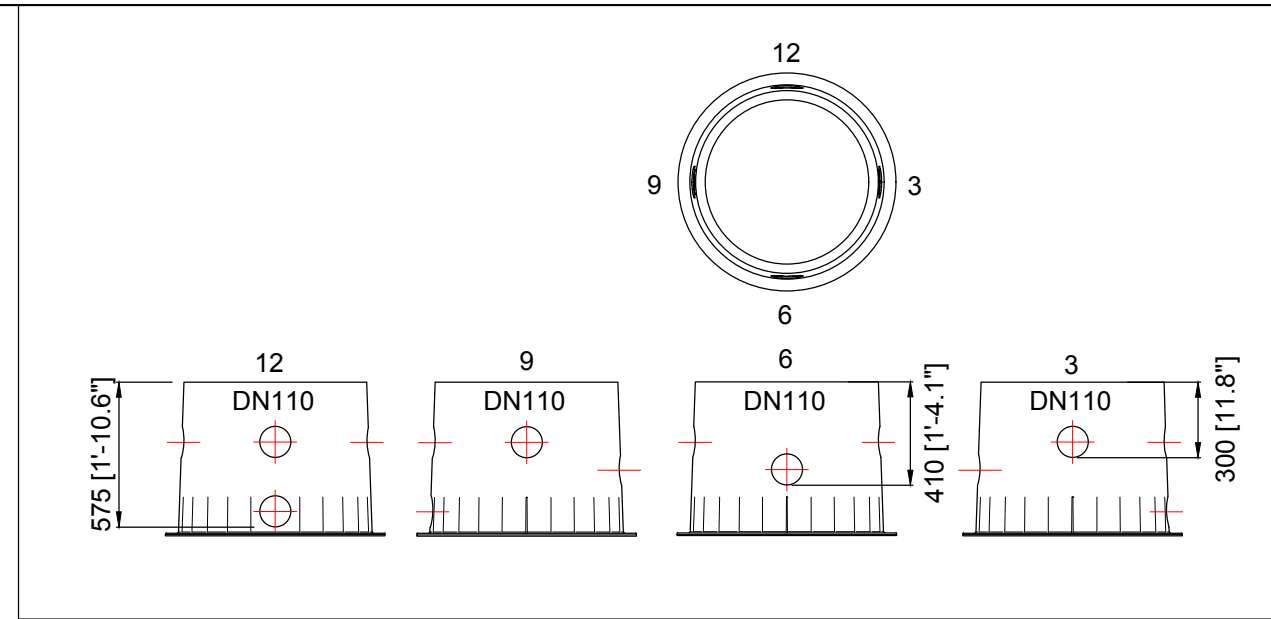
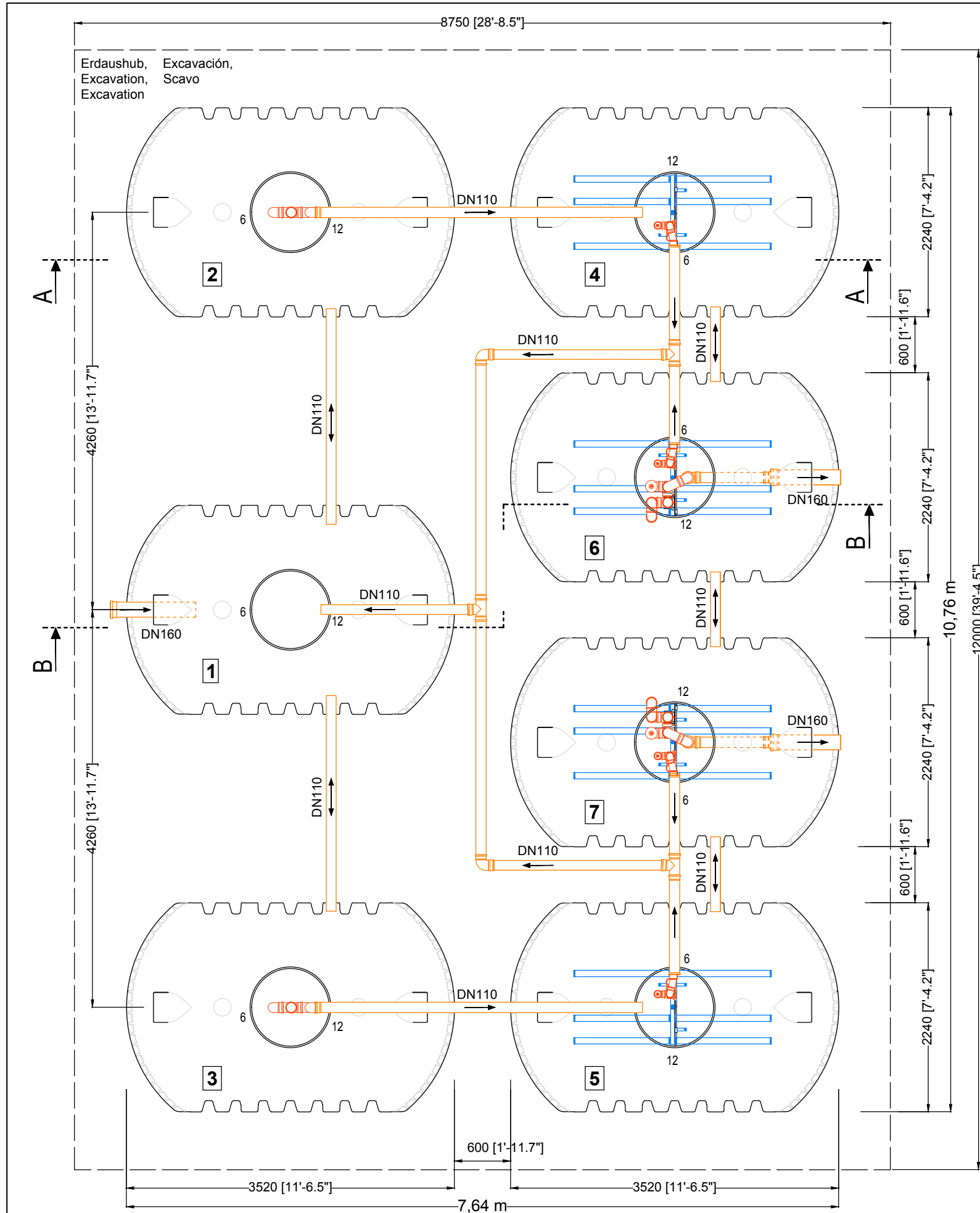



Luftschläuche, Compressed air, Tuyaux de pression, Mangueras de presión, Tubi di aria compressa			
<b>A</b>	Belüftung Aeration Aération Ventilación Ventilazione	25mm Ø (blau) 25mm Ø (blue) 25mm Ø (bleu) 25mm Ø (azul) 25mm Ø (blu)	
<b>B</b>			
<b>C</b>	Beschickungsheber Charging lifter Transfert Alimentación Alimentazione	19mm Ø (rot) 19mm Ø (red) 19mm Ø (rouge) 19mm Ø (rojo) 19mm Ø (rosso)	
<b>D</b>	Klarwasserabzug Discharging lifter Évacuation des eaux traitées Drenaje de agua clara Scarico di acqua chiara	19mm Ø (schwarz) 19mm Ø (black) 19mm Ø (noir) 19mm Ø (negro) 19mm Ø (nero)	
<b>S</b>	Schlammrückführung Sludge return Recirculation des boues Recirculación lodos Ricircolo dei fanghi	19mm Ø (weiß) 19mm Ø (white) 19mm Ø (blanc) 19mm Ø (blanco) 19mm Ø (bianco)	

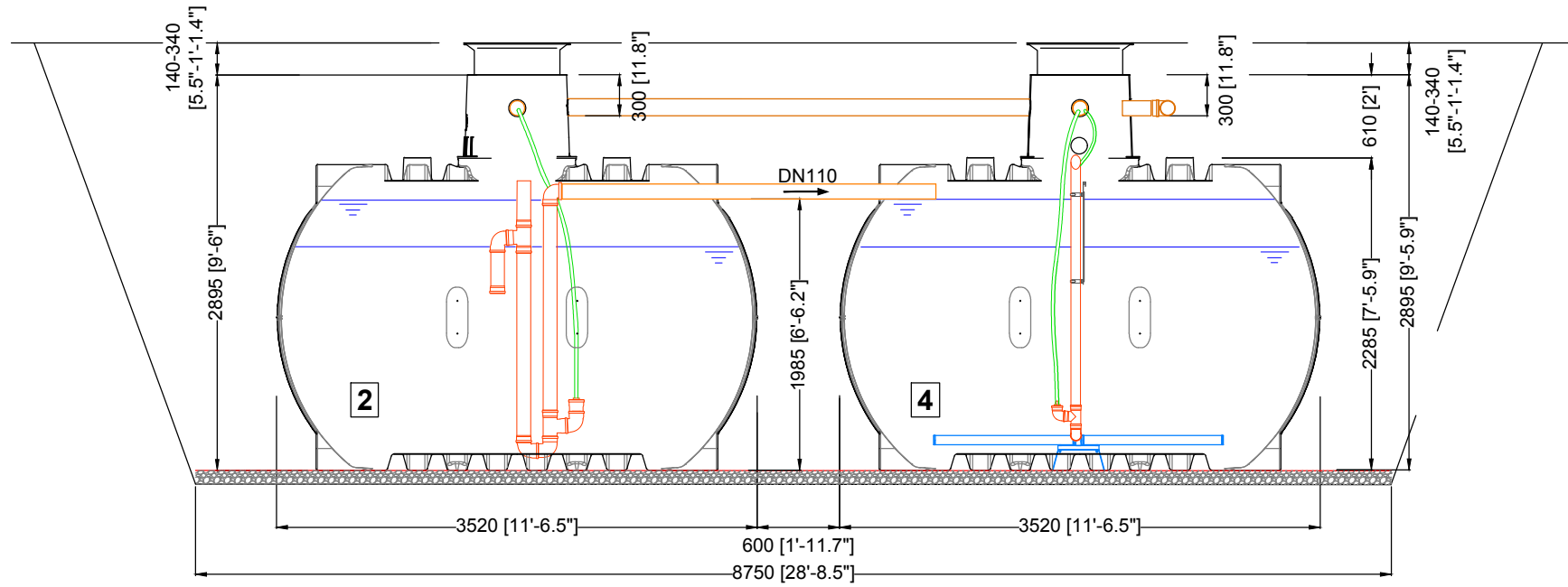
Grundriss Luftschläuche  
 Top view compressed air  
 Plan de raccordement des tuyaux d'air  
 Vista superior tubería aire comprimido  
 Pianta dei tubi di aria compressa

D Klaro XL 200 EW - Tankdom Maxi 7 x Carat XL 10000 L / 7 x 2641,7 gal.			Artikel-Nr. product no. article no. articolo no.	106177	
GB	Klaro XL 200 inh. TD-Maxi 7 x Carat XL 10000 L / 2641,7 gal.	ES	Klaro XL 200 PE Cúpula Maxi 7 x Carat XL 10000 L / 2641,7 gal.	FR	Klaro XL 200 EH Maxi-dôme 7 x Carat XL 10000 L / 2641,7 gal.
gezeichnet drawn		ISC		Gewicht weight	
Datum date		2019.05.06		Toleranz tolerance	+/- 3%
Maßstab scale		1:50 / 1:30		Einheiten units	mm [inch] gal. = US gal.
Otto Graf GmbH Carl-Zeiss-Str. 2-6 DE-79331 Teningen mail@graf.info www.graf.info					
				revision	2 / 3



Grundriss Abwasserbehandlung  
 Top view wastewater treatment  
 Plan de mise en oeuvre  
 Planta tratamiento de aguas residuales  
 Pianta del trattamento delle acque reflue

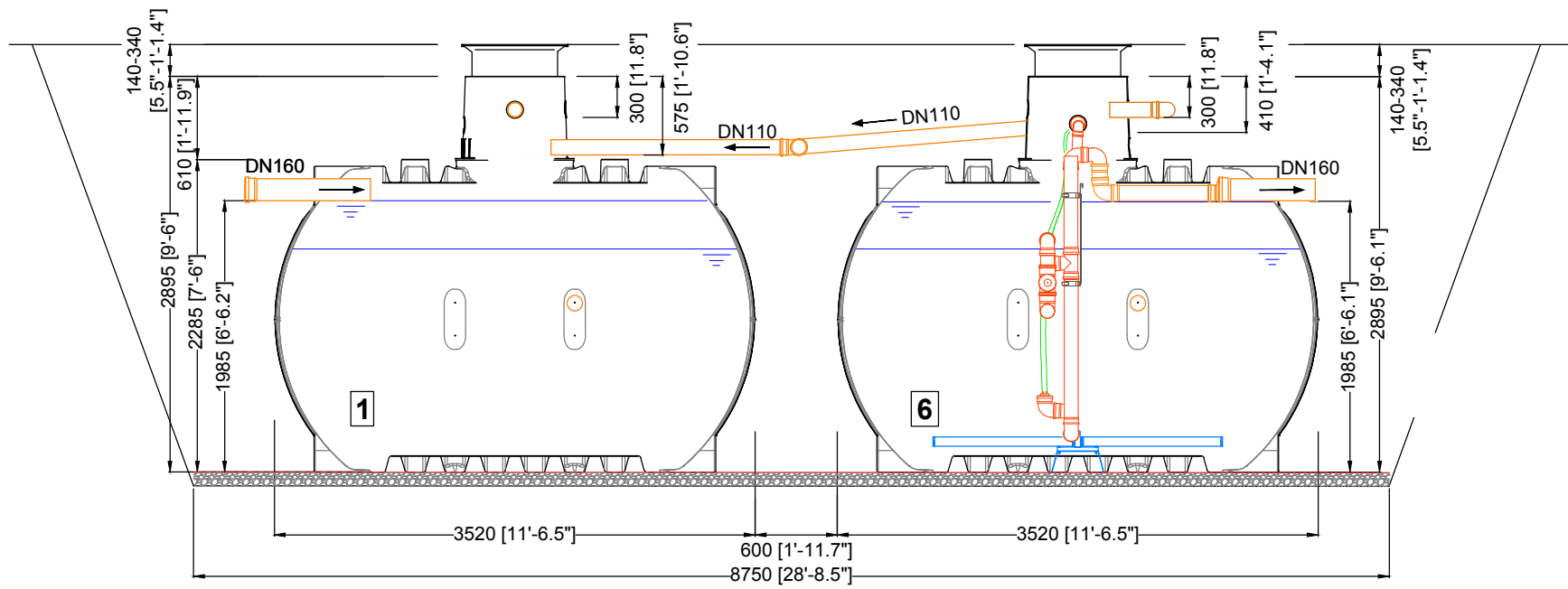
<b>D</b> Klaro XL 200 EW - Tankdom Maxi 7 x Carat XL 10000 L / 7 x 2641,7 gal.			Artikel-Nr. product no. article no. articolo no. <b>106177</b>
GB Klaro XL 200 inh. TD-Maxi 7 x Carat XL 10000 L / 2641,7 gal.	ES Klaro XL 200 PE Cúpula Maxi 7 x Carat XL 10000 L / 2641,7 gal.	FR Klaro XL 200 EH Maxi-dôme 7 x Carat XL 10000 L / 2641,7 gal.	revision <b>1 / 3</b>
gezeichnet drawn <b>ISC</b>	Gewicht weight	<b>Otto Graf GmbH</b> Carl-Zeiss-Str. 2-6 DE-79331 Teningen mail@graf.info www.graf.info	
Datum date <b>2019.05.06</b>	Toleranz tolerance <b>+/- 3%</b>		
Maßstab scale <b>1:50 / 1:30</b>	Einheiten units mm [inch] gal. = US gal.		



Vorklärung / Schlamm-speicher  
 Pre-treatment / Sludge storage  
 Traitement primaire / Stockage des boues  
 Tratamiento primario / Almacenamiento de lodo  
 Trattamento primario / Stoccaggio dei fanghi

SBR Reaktor  
 SBR-reactor  
 Réacteur-SBR  
 SBR-reactor  
 SBR-reattore

**A-A**



Vorklärung / Schlamm-speicher  
 Pre-treatment / Sludge storage  
 Traitement primaire / Stockage des boues  
 Tratamiento primario / Almacenamiento de lodo  
 Trattamento primario / Stoccaggio dei fanghi

SBR Reaktor  
 SBR-reactor  
 Réacteur-SBR  
 SBR-reactor  
 SBR-reattore

**B-B**

D Klaro XL 200 EW - Tankdom Maxi 7 x Carat XL 10000 L / 7 x 2641,7 gal.			Artikel-Nr. product no. article no. artículo no.	106177
GB Klaro XL 200 inh. TD-Maxi 7 x Carat XL 10000 L / 2641,7 gal.	ES Klaro XL 200 PE Cúpula Maxi 7 x Carat XL 10000 L / 2641,7 gal.	FR Klaro XL 200 EH Maxi-dôme 7 x Carat XL 10000 L / 2641,7 gal.	revision	3 / 3
gezeichnet drawn	ISC	Gewicht weight	Otto Graf GmbH Carl-Zeiss-Str. 2-6 DE-79331 Teningen mail@graf.info www.graf.info	
Datum date	2019.05.06	Toleranz tolerance	+/- 3%	
Maßstab scale	1:50 / 1:30	Einheiten units	mm [inch] gal. = US gal.	

